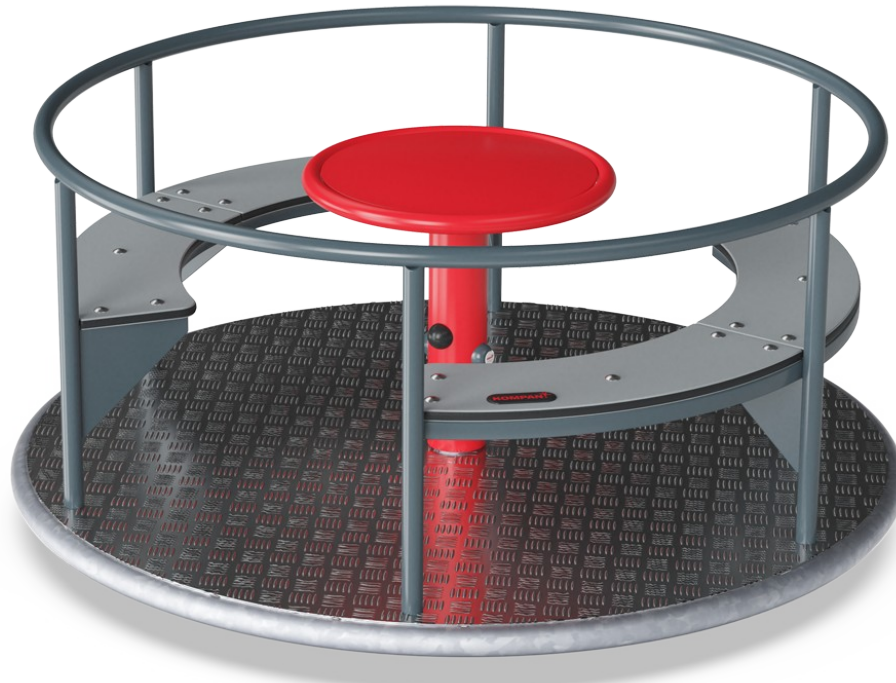


Carousel with Bench

KPL114

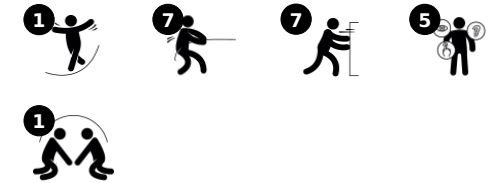
KOMPAN[®]



Item no. KPL114-0902

General Product Information

Dimensions LxWxH	155x155x71 cm
Age group	2+
Play capacity (users)	8
Colour options	



The red, spinning carousel attracts children and adults alike. With its turn table and two benches it radiates social spinning play, and children cannot get enough of that. The spinning can be started by pushing or pulling the carousel into motion from the outside. Or, when seated, users can use the table as a

stable base to turn the carousel from. The rounded shape makes room for users both seated and standing. Spinning on the carousel trains the vestibular system and the whole sense of balance. This is fundamental for the child's ability to move around the world safely. It's fundamental for walking, running and

even being able to sit still and concentrate. When the sense of balance is under-developed, children can focus on nothing but keeping equilibrium, seated or standing. So the fun of the thrill by spinning serves a true purpose.



Carousel with Bench

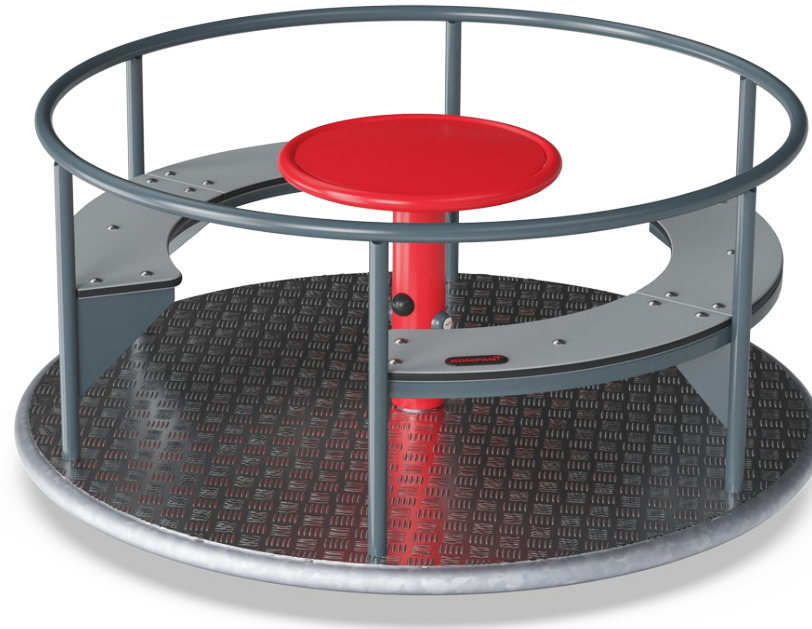
KPL114

KOMPANI[®]



Center table

Physical: training of hand, arm and core muscles when turning the carousel.
Social-Emotional: cooperation when spinning. Consideration of others when deciding speed of spin. **Cognitive:** understanding of cause and effect and logical thinking for younger children.



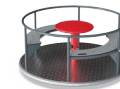
Carousel bench

Social-Emotional: great gathering points placed oppositely to make eye contact possible. This facilitates the cooperation in spinning the carousel.



Handrails and side poles

Physical: pushing or pulling the carousel strengthens arm and leg muscles. **Social-Emotional:** pushing and pulling others facilitates cooperation and empathy: when to stop, how to take turns etc.



Rotation

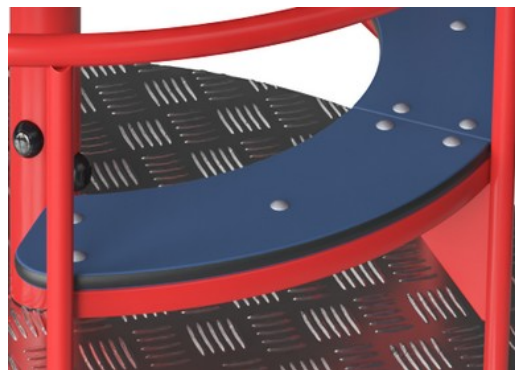
Physical: pushing or pulling it into motion, children use their muscle strength and strengthen their cardio. The rotation develops the sense of balance and space when enjoying the ride. **Social-Emotional:** listening and negotiating how slow or fast to go, children develop their empathy and cooperation skills.

Carousel with Bench

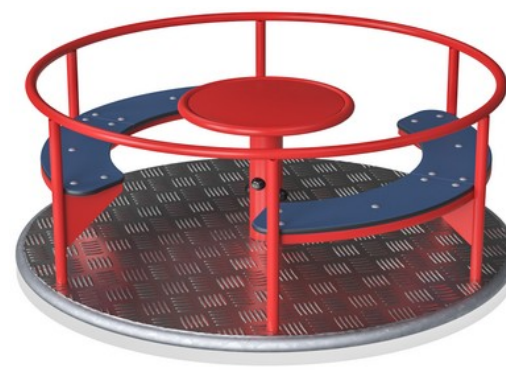
KPL114



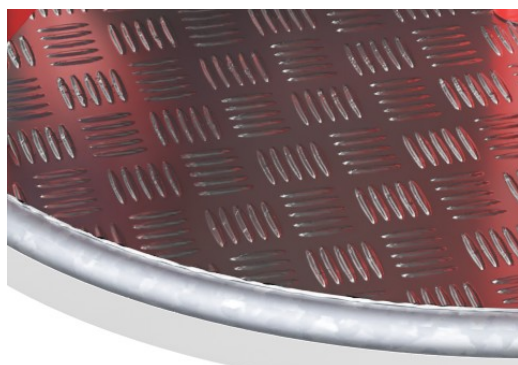
The steel surfaces are hot dip galvanised inside and outside with lead free zinc and with powder coated top-finish. The galvanisation has excellent corrosion resistance in outside environments and requires low maintenance.



Seats are made of 19mm EcoCore™. EcoCore™ is a highly durable, eco-friendly material, which is not only recyclable after use, but it is also Made of +95% recycled post-consumer material from e.g., food packing waste in both core and colorful outer layer.



Heavy duty engineered bearing system with two single row deep groove high quality ball bearings with rubber seals. The fully closed bearing construction is lifetime lubricated and located above ground.



Deck plate of 3mm thick high-quality aluminium with 2mm texture pattern. This aluminium plate ensures safe play for all users and requires low maintenance.

Item no. KPL114-0902

Installation Information

Max. fall height	100 cm
Safety surfacing area	24.2 m ²
Total installation time	4.1 hours
Excavation volume	0.56 m ³
Concrete volume	0.50 m ³
Footing depth (standard)	100 cm
Shipment weight	194 kg
Anchoring options	In-ground ✓

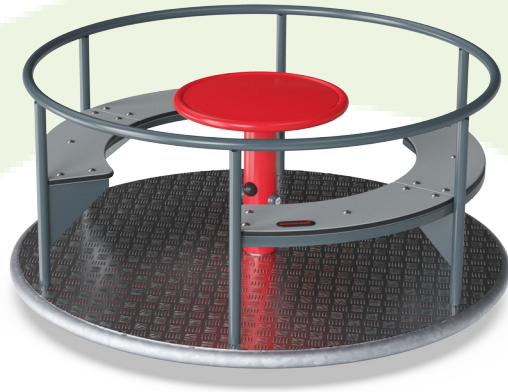
Warranty Information

Hot dip galvanised steel	Lifetime
Aluminium deck	15 years
HPL decks	15 years
Bearing construction	5 years
Spare parts guaranteed	10 years



Sustainability Data

KPL114



Cradle to Gate A1-A3	Total CO ₂ emission	CO ₂ e/kg	Recycled material
	kg CO ₂ e	kg CO ₂ e/kg	%
KPL114-0902	1,010.65	6.11	48.01

The overall framework applied for these factors is the Environmental Product Declaration (EPD), which quantifies "environmental information on the life cycle of a product and enable comparisons between products fulfilling the same function" (ISO, 2006). This follows the structure and applies a Life-Cycle Assessment approach to the entire Product stage from raw material through manufacturing (A1-A3))



Independent review certificate

Kompan A/S
C. F. Tietgens Blvd. 32C, 5220 Odense SØ

Bureau Veritas hereby attests that the CO₂e-calculations (covering materials, processing, waste and transport) done by Kompan for "Freestanding Play Equipment", meet the requirements set by the listed standard.

Kompan A/S uses a selection of EPDs and emission factors from the Life Cycle Assessment database Ecoinvent 3.11. These values are reported as kg CO₂e, with all other impact categories excluded in line with the scope of ISO 14067:2018. The emission factors cover, material use, manufacturing processes, transport to Kompan, and electricity used during manufacturing. The presented emissions fall under GHG Protocol scope 3 emissions. Scope 1 and 2 are not presented. Scope 3 emissions include emission sources in the upstream value chain of a company, downstream emissions are excluded in this analysis.

Method: ISO 14067:2018 using GHG protocol guidance documents, reported as kg CO₂e.

Object

The verification has been done on the one pager "GXY916012-3417" version: 27-10-2025. The supporting documentation "KOMPAN data_updated emissions factors_2025_V2" and "Emissions factors, EPD's and ecoinvent 3.11_2025" was also reviewed and approved.

Declaration

The verification has been completed as a critical review with a limited assurance. I hereby confirm that nothing has come to the reviewer's attention which would lead to conclude that the study does not give an accurate depiction or isn't completed following method of the CO₂e calculation, the requirements of ISO 14067:2018, and 14071:2024, in the above referenced documentation.

Note: This verification only covers calculation elements according to method described in ISO 14067:2018 and may not be seen as a Life Cycle Assessment according to ISO 14067:2018.

Ref.: Kompan_Verification report 2025, 28-10-2025

Date of certificate: 29-10-2025

Expire date: 29-10-2027

Verified by: Julie Marie Vejsgaard Larsen, Environmental Auditor

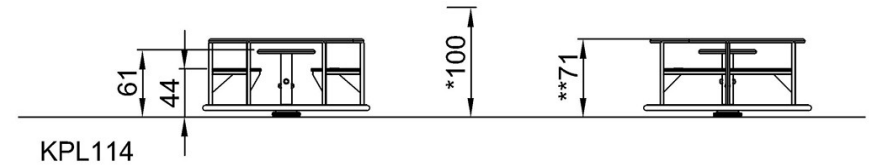
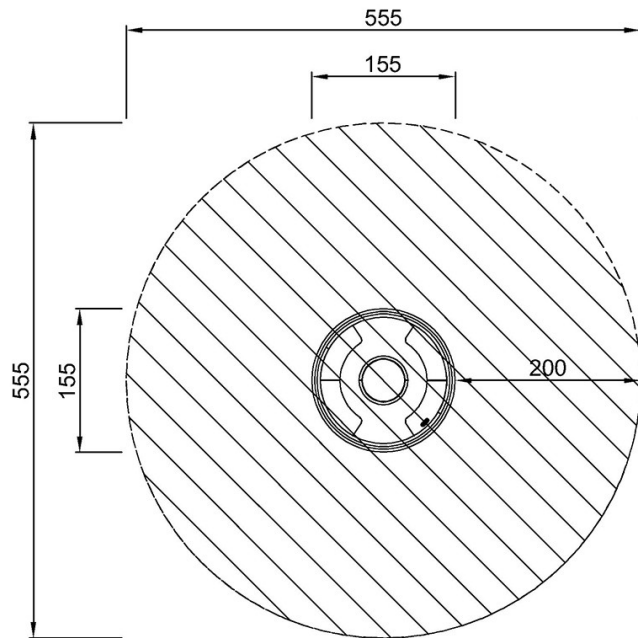
Signature:

Carousel with Bench

KPL114

* Max fall height | ** Total height | *** Safety surfacing area

* Max fall height | ** Total height



KPL114
*100cm
**71cm
***24.2m²

[Click to see TOP VIEW](#)

[Click to see SIDE VIEW](#)