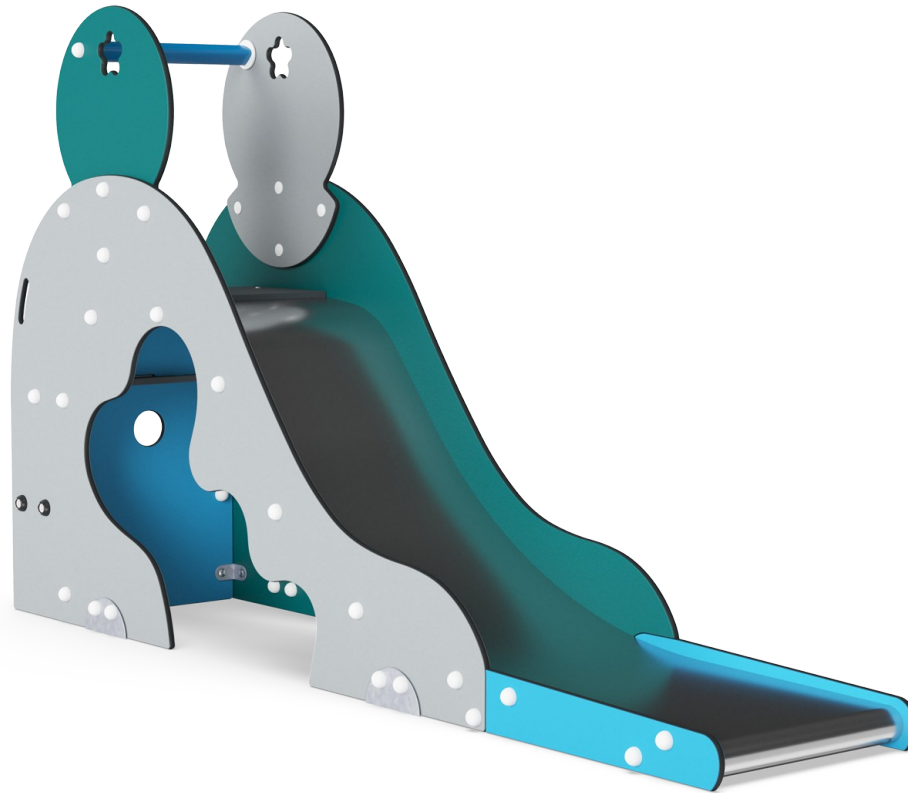


# Aladdin's Cave

M326


**KOMPAN**

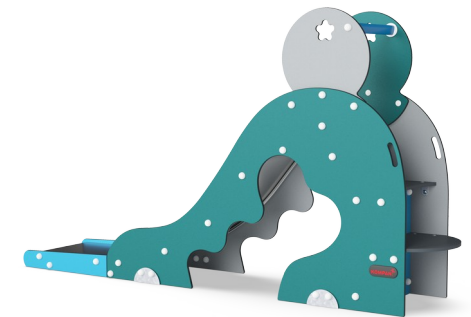
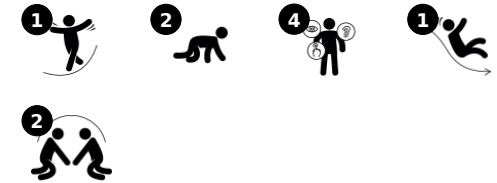


Aladdin's Cave is a KOMPAN original. With its whimsical, classic KOMPAN shapes and vivid colours, it has attracted and amused children for generations. It is a true playground hit: the ergonomically shaped stair leads securely, with good handgrips, to the wide steel slide. The slide sides offer additional grip support.

This is good, as the inclination of the Aladdin's Cave slide is designed for thrilling rides: steep first, so the slide gains speed in the beginning. Shallow and long at the end, so that the ride ends securely and safely. This is the recipe for true success in sliding: fun within a secure framework. Sliding also trains the

child's body stability and the senses of balance and space, which are important skills for body mastery and, for instance, sitting still on a chair. Under the slide a nice room for socializing allows children to make friends for life.

Item no. M32671-3418P	
<b>General Product Information</b>	
Dimensions LxWxH	60x293x165 cm
Age group	2+
Play capacity (users)	2
Colour options	



*Data is subject to change without prior notice.*

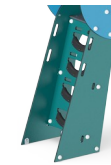
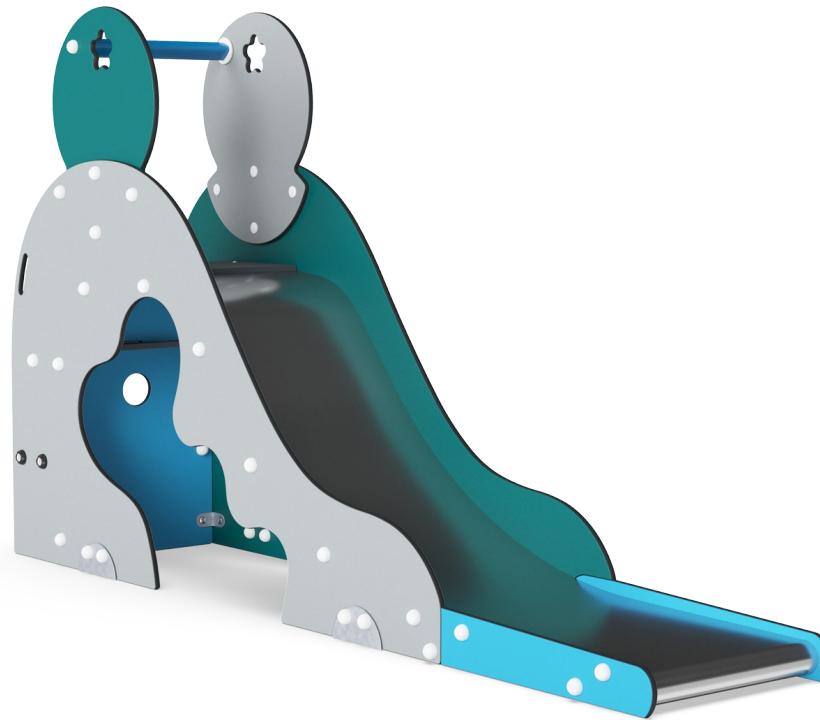
# Aladdin's Cave

M326



## Slide

**Physical:** sliding develops spatial awareness and a sense of balance. Furthermore, the core muscles are trained when sitting upright going down.  
**Social-Emotional:** empathy stimulated by turn-taking.



## Stair ladder

**Physical:** cross coordination is used, supporting the cooperation of the left and right halves of the brain, which is necessary for reading. For young children, spatial awareness is trained when walking stairs.



## Den

**Physical:** crawling through the possible openings trains spatial awareness.  
**Social-Emotional:** the enclosed space invites social play for two or three children.

# Aladdin's Cave

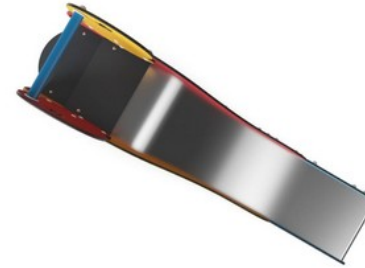
M326



Panels of 19mm EcoCore™. EcoCore™ is a highly durable, eco friendly material, which is not only recyclable after use, but also consists of material produced from +95% recycled post consumer material from food packing waste.



The steps are made of High Pressure Laminate HPL with a thickness 17,8mm and non skid surface texture according to EN 438-6. KOMPANI HPL has high wearing strength to ensure long lifetime in all climates.

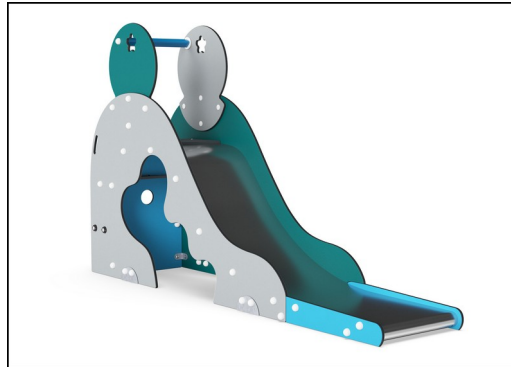


The stainless-steel slides with one-piece slide bed are made of high-quality stainless-steel AISI 304.

Item no. M32671-3418P	
Installation Information	
Max. fall height	100 cm
Safety surfacing area	15.8 m <sup>2</sup>
Total installation time	4.4 hours
Excavation volume	0.45 m <sup>3</sup>
Concrete volume	0.00 m <sup>3</sup>
Footing depth (standard)	63 cm
Shipment weight	206 kg
Anchoring options	In-ground ✓ Surface ✓
Warranty Information	
EcoCore HDPE	Lifetime
HPL decks	15 years
Stainless steel slide	10 years
Spare parts guaranteed	10 years



Handle is made of polypropylene PP with excellent impact strength and usable within a large temperature span.

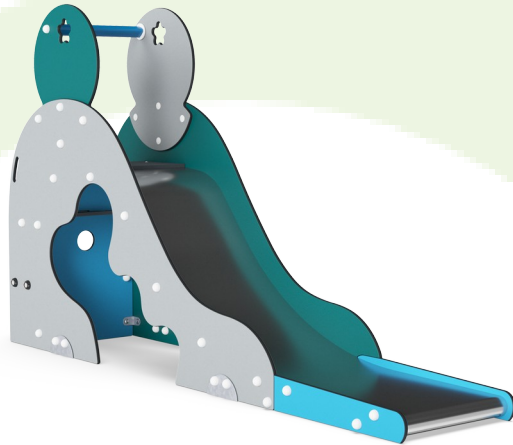


KOMPANI GreenLine versions are designed with ultimate environmentally friendly materials with lowest possible CO<sub>2</sub>e emission factor such as EcoCore™ panels of +95% post consumer recycled ocean waste.



# Sustainability Data

M326



Cradle to Gate A1-A3	Total CO <sub>2</sub> emission	CO <sub>2</sub> e/kg	Recycled material
	kg CO <sub>2</sub> e	kg CO <sub>2</sub> e/kg	%
<b>M32671-3418P</b>	411.17	3.05	68.72

The overall framework applied for these factors is the Environmental Product Declaration (EPD), which quantifies "environmental information on the life cycle of a product and enable comparisons between products fulfilling the same function" (ISO, 2006). This follows the structure and applies a Life-Cycle Assessment approach to the entire Product stage from raw material through manufacturing (A1-A3))



## Independent review certificate

Kompan A/S  
C. F. Tietgens Blvd. 32C, 5220 Odense SØ

Bureau Veritas hereby attests that the CO<sub>2</sub>e-calculations (covering materials, processing, waste and transport) done by Kompan for "Freestanding Play Equipment", meet the requirements set by the listed standard.

Kompan A/S uses a selection of EPDs and emission factors from the Life Cycle Assessment database Ecoinvent 3.11. These values are reported as kg CO<sub>2</sub>e, with all other impact categories excluded in line with the scope of ISO 14067:2018. The emission factors cover, material use, manufacturing processes, transport to Kompan, and electricity used during manufacturing. The presented emissions fall under GHG Protocol scope 3 emissions. Scope 1 and 2 are not presented. Scope 3 emissions include emission sources in the upstream value chain of a company, downstream emissions are excluded in this analysis.

Method: ISO 14067:2018 using GHG protocol guidance documents, reported as kg CO<sub>2</sub>e.

### Object

The verification has been done on the one pager "GXY916012-3417" version: 27-10-2025. The supporting documentation "KOMPAN data\_updated emissions factors\_2025\_V2" and "Emissions factors, EPD's and ecoinvent 3.11\_2025" was also reviewed and approved.

### Declaration

The verification has been completed as a critical review with a limited assurance. I hereby confirm that nothing has come to the reviewer's attention which would lead to conclude that the study does not give an accurate depiction or isn't completed following method of the CO<sub>2</sub>e calculation, the requirements of ISO 14067:2018, and 14071:2024, in the above referenced documentation.

**Note:** This verification only covers calculation elements according to method described in ISO 14067:2018 and may not be seen as a Life Cycle Assessment according to ISO 14067:2018.

**Ref.:** Kompan\_Verification report 2025, 28-10-2025

**Date of certificate:** 29-10-2025

**Expire date:** 29-10-2027

**Verified by:** Julie Marie Vejsgaard Larsen, Environmental Auditor

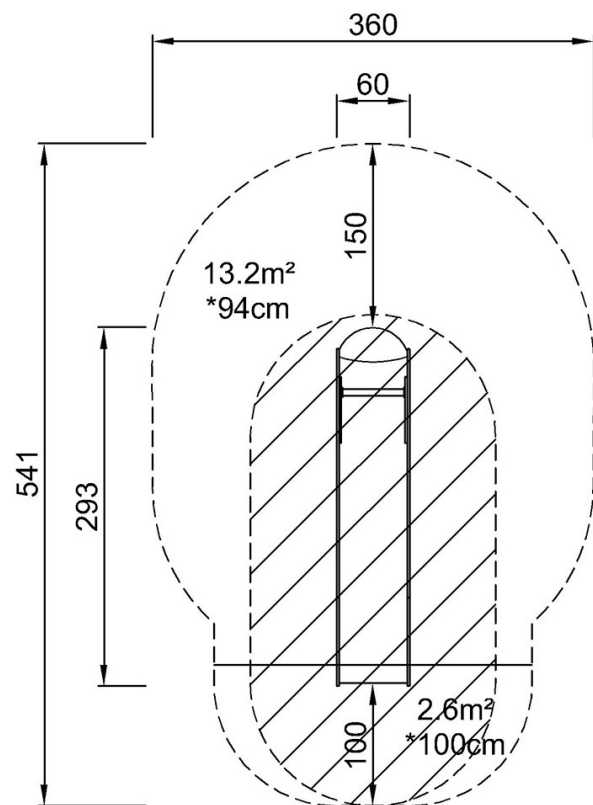
**Signature:**

# Aladdin's Cave

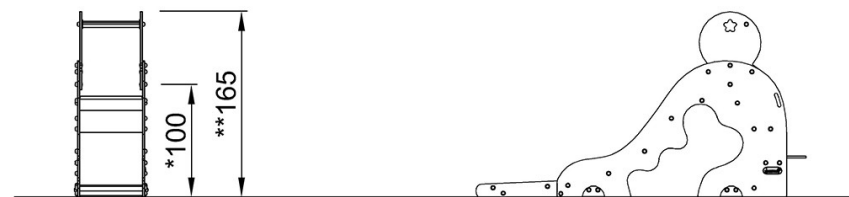
M326

\* Max fall height | \*\* Total height | \*\*\* Safety surfacing area

\* Max fall height | \*\* Total height



M32671  
\*100cm  
\*\*165cm  
\*\*\*15.8m<sup>2</sup>



M32671

[Click to see TOP VIEW](#)

[Click to see SIDE VIEW](#)