



STAIRS & RAMP

FSW22900



Item no. FSW22900-0902

General Product Information

Dimensions LxWxH	101 x 415 x 163 cm
Age Group	13+
Capacity	2 adults
Colour Options	 



The stair and ramp resembles some common everyday obstacles. Walking on an inclining slope and overcoming stairs. The simplest use is just walking back and forth on the module, but with variations in the task, specific skills can be trained. For example focusing on balance by walking without hand support or focusing on strength and mobility by deliberately using as

long steps as possible. The stairs are available in two different versions: normal stairs or steep stairs. These can also be used for simple effective exercises like step-ups and lunges. The ability to walk safely on an inclining or declining slope is very important for the elderly. If body posture is not correctly aligned with the surface, the risk of falling is increased. With

support from the rails, this skill can be trained in a safe environment.

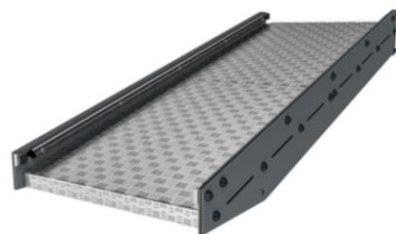


STAIRS & RAMP

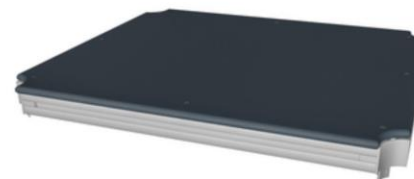
FSW22900



The Four-steps are 900x280mm and have a height of 171mm.



The ramp is mounted under a 150 and has a length of 2300mm. The ramp is made from 5mm Aluminum plate with an anti-slip pattern.



All decks are supported by unique designed aluminum profiles with multiple attachment options by usage of pressure molded aluminum connectors. The HPL decks with a thickness of 17,8mm with a very high wearing strength and a unique KOMPAN nonskid surface texture.

Item no. FSW22900-0902	
Installation Information	
Max. fall height	69 cm
Safety surfacing area	265 m ²
Numbers of Installers (persons)	2
Total installation time	11
Excavation volume	0.33 m ³
Concrete volume	0.1 m ³
Footing Depth (Standard)	90 cm
Shipment Weight	343 kg
Anchoring options	In-ground ✓ Surface ✓
Warranty information	
Panels	Lifetime
Post	10 Years
Floors (decks)	10 Years
Galvanised structural parts	Lifetime
Spare parts guaranteed	10 Years



The railing height is 930mm and the distance between the railing is 900mm. The material used for the railing is hot-dip galvanized steel Ø38 mm, a great diameter for a good grip and to support the wrist.



The information sign is made of a PA6 (Polyamide) and shows the most relevant exercise and a QR code. When scanned the QR code will link to an animated illustration of the exercise and offers the possibility of downloading the KOMPAN sport & fitness App, which will provide a large amount of exercises and workouts.



Post are made of Ø101.6 x 2mm, pre-galvanized carbon steel and powder coated, a great protection to all conditions.

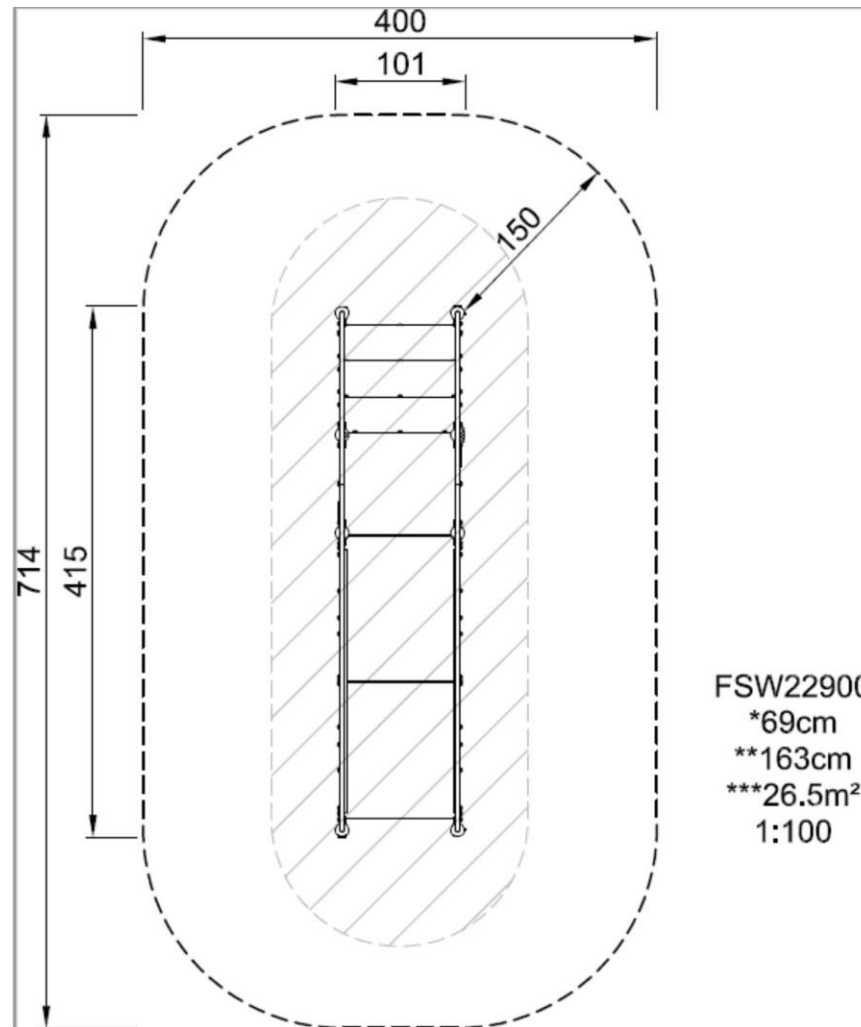


STAIRS & RAMP

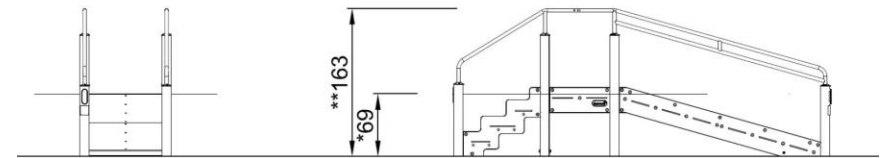
FSW22900

Max fall height | Total height | Safety surfacing area

Max fall height | Total height



FSW22900
*69cm
**163cm
***26.5m²
1:100



FSW22900
1:100

[Click to see 1:100 ratio TOP VIEW](#)

[Click to see 1:100 ratio SIDE VIEW](#)